

THE GHAZI COMPANY, L.L.C
ROCK CREEK DRIVE
CHARLOTTE, NORTH CAROLINA



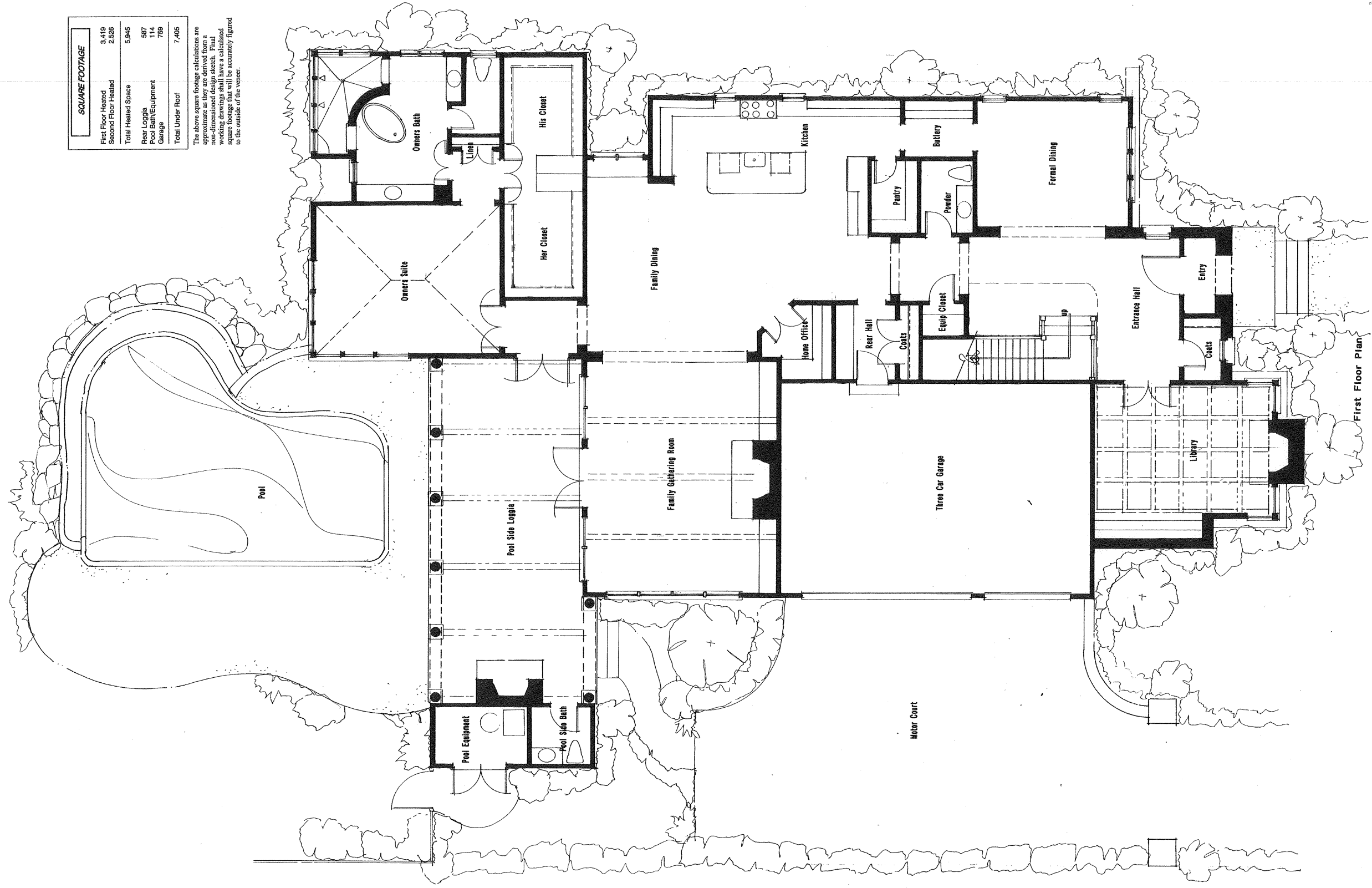
**Christopher Phelps
& Associates**
a residential design firm

225 East Worthington Avenue
Suite 200
Charlotte, NC 28203
TEL: 704-377-5569
FAX: 704-377-8909

November 16, 2007

SQUARE FOOTAGE	
First Floor Heated	3,419
Second Floor Heated	2,526
Total Heated Space	5,945
Rear Loggia	687
Pool Bath/Equipment	114
Garage	759
Total Under Roof	7,405

The above square footage calculations are approximate as they are derived from a non-dimensioned design sketch. Final working drawings shall have a calculated square footage that will be accurately figured to the outside of the veneer.



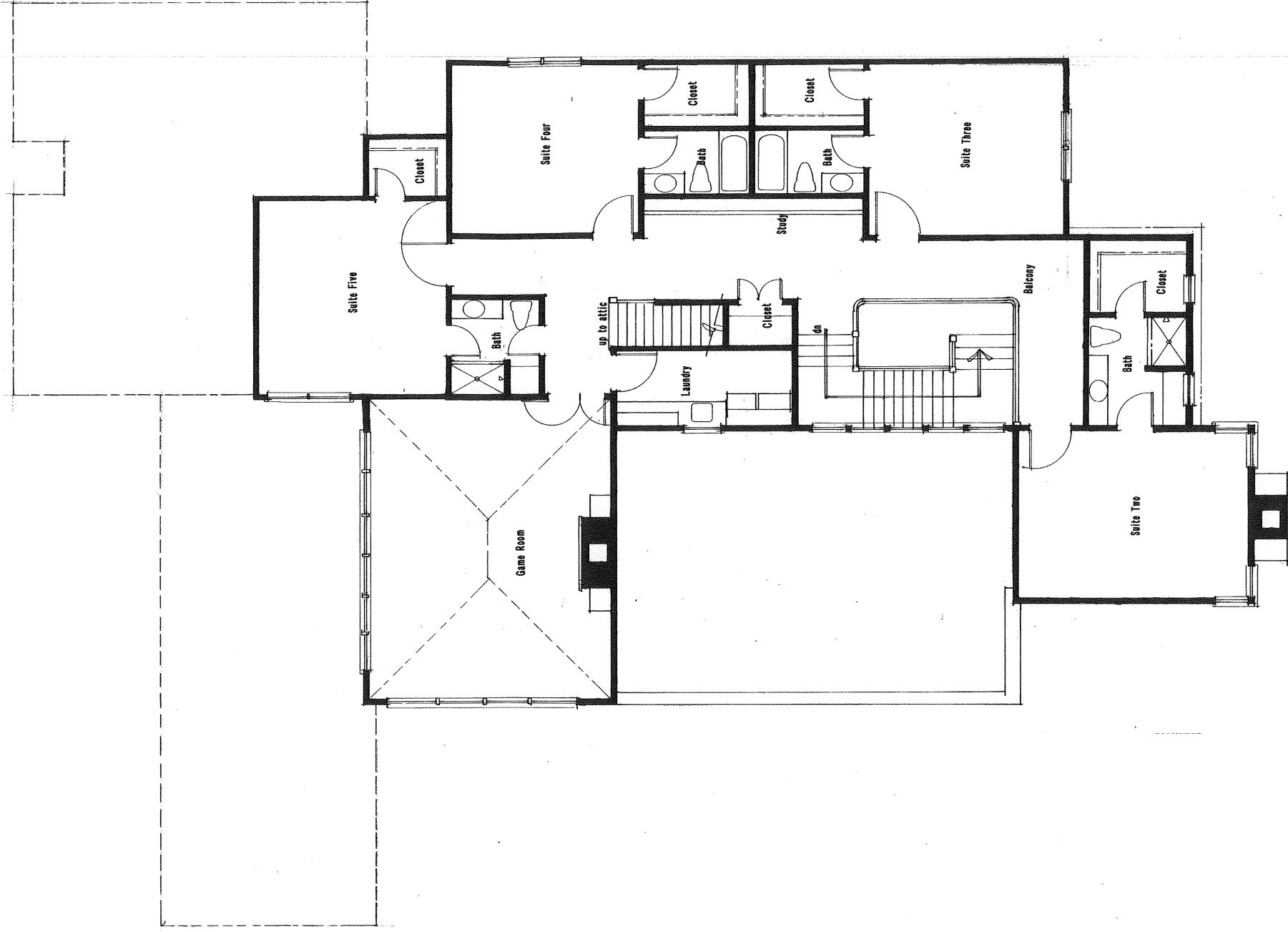
First Floor Plan

THE GHAZI COMPANY, L.L.C
ROCK CREEK DRIVE
CHARLOTTE, NORTH CAROLINA



SQUARE FOOTAGE	
First Floor Heated	3,410
Second Floor Heated	2,526
Total Heated Space	5,945
Rear Loggia	567
Pool Bath/Equipment	114
Garage	759
Total Under Roof	7,405

The above square footage calculations are based on the finished floor level. All non-dimensioned design sketch items shown in working drawings shall have a calculated square footage that will be accurately figured to the outside of the veneer.



Second Floor Plan

THE GHAZI COMPANY, L.L.C
ROCK CREEK DRIVE
CHARLOTTE, NORTH CAROLINA

