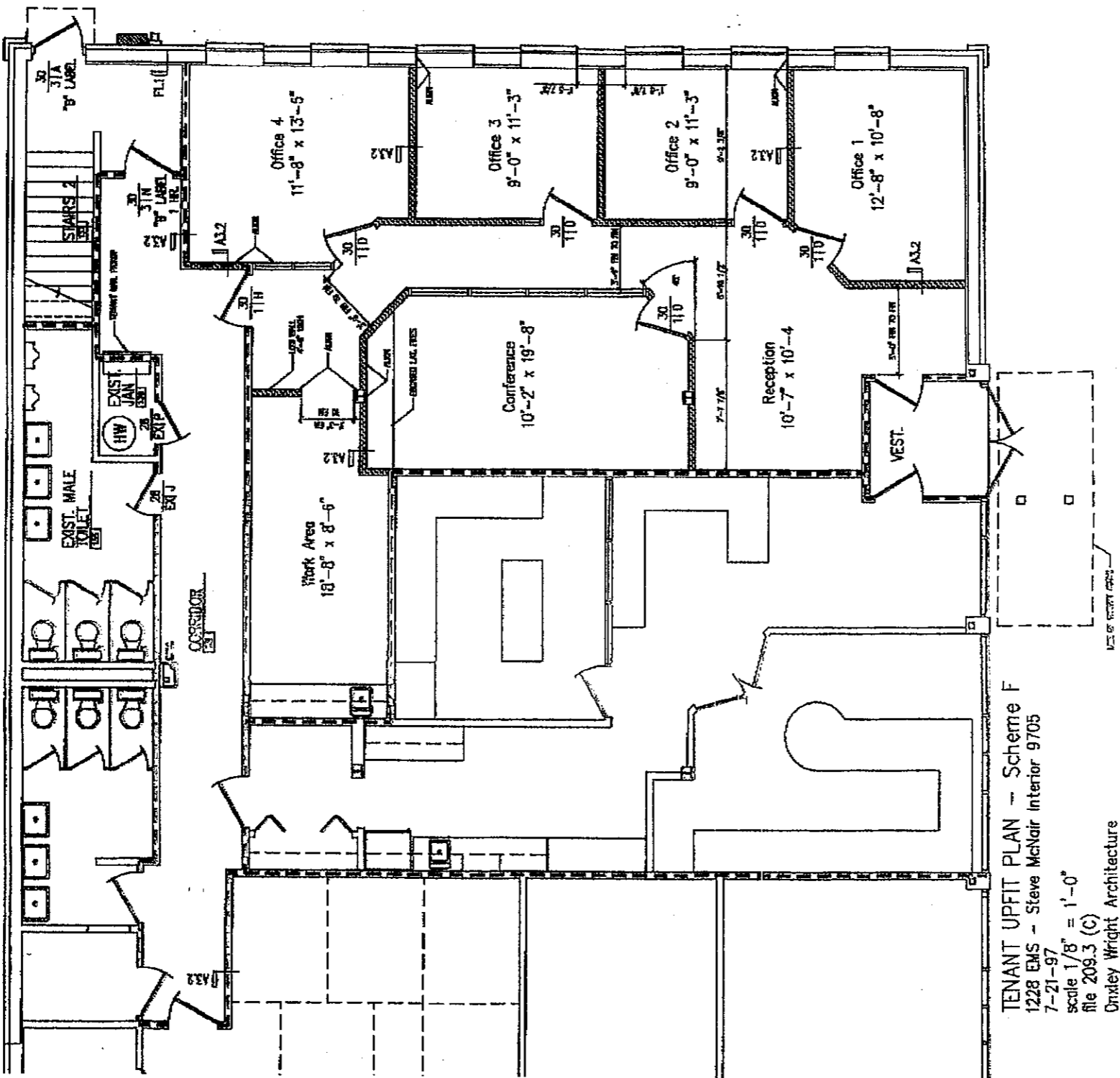


FBW
CE

EXHIBIT A



TENANT UPFIT PLAN - Scheme F
 1228 EMS - Steve McNair Interior 9705
 7-21-97
 scale 1/8" = 1'-0"
 file 20603 (C)
 Dnxley Wright Architecture

FROM : DNKLEY WRIGHT ARCHITECTURE

PHONE NO. :

OCT. 02 1997 03:58PM P2



An office renovation of
1228 E. Morehead Street
Charlotte, North Carolina

PROJECT NUMBER
9604

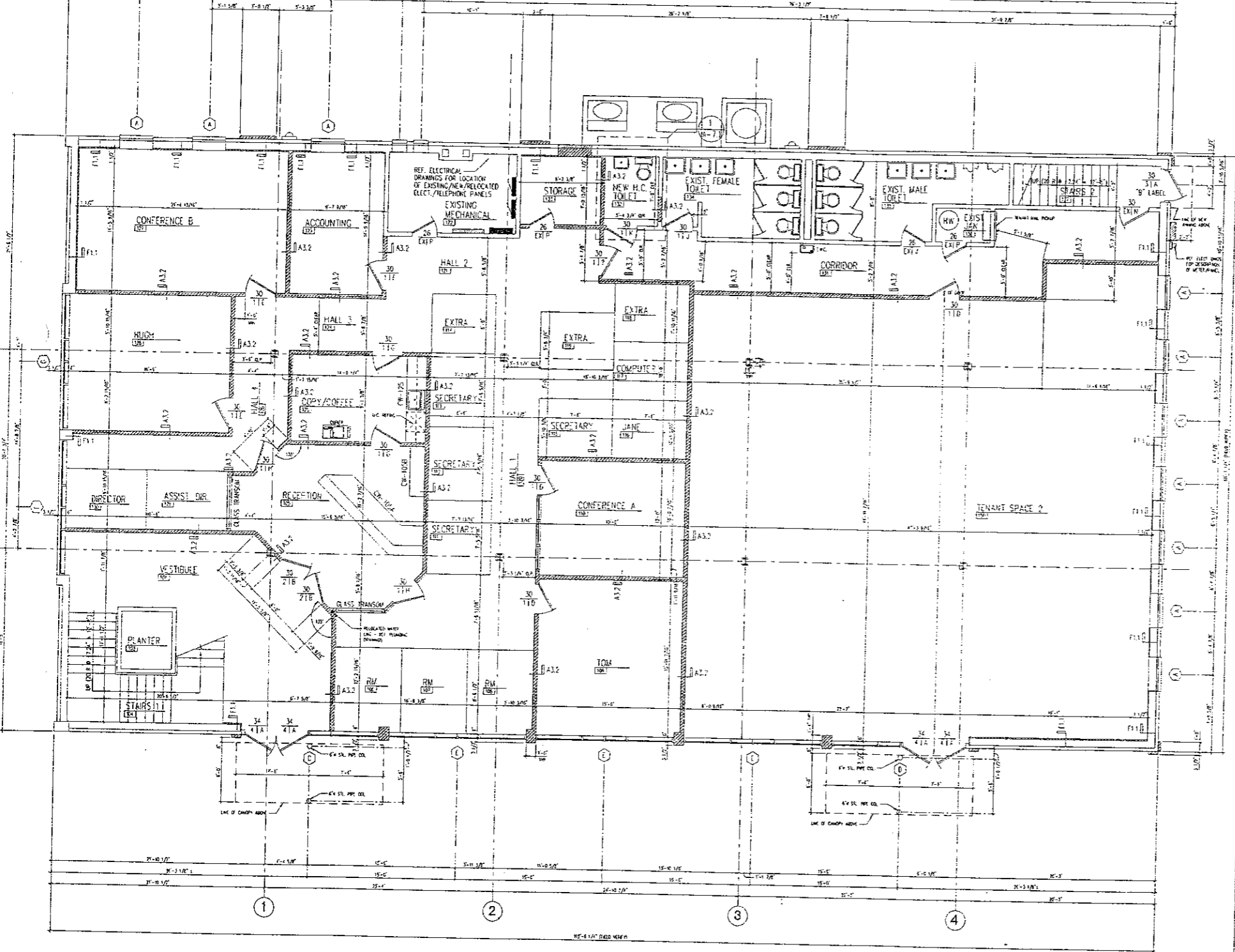
NOT FOR CONSTRUCTION

ISSUED FOR
PERMIT
E-12-96

PROGRESS
DRAWINGS
E-23-96

DRAWN BY G.G.B.

RENOVATED
FIRST FLOOR
PLAN



| FIRST FLOOR | |
|--|---------|
| CONSTRUCTION AREA | 6745 SF |
| RENTABLE AREA - SINGLE TENANT (LUA + CA = R.A.) | 6357 SF |
| USABLE AREA - MULTIPLE TENANT | 5015 SF |
| HARPER'S | 2846 SF |
| FUTURE TENANT | 2167 SF |
| CORE AREA - TEL/MECH/CIRCULATION | 1344 SF |

- F.F.E. 3'-0" FINISHED FLOOR ELEVATION
- CW-142 CASEWORK NUMBER
REF. CASEWORK DETAIL SHEET
- WINDOW TYPE
REF. A-32 FOR WINDOW TYPE
- A3.2 PARTITION TYPE
REF. A-01 FOR PARTITION TYPES
- DOOR SYMBOL
DOOR WIDTH (30 = 3'-0")
HARDWARE SET = REF. A-3.3
DOOR TYPE = REF. A-3.3
(EX = EXISTING)
- 4 HOUR RATED PARTITION
- 3 HOUR RATED PARTITION
- 2 HOUR RATED PARTITION
- 1 HOUR RATED PARTITION