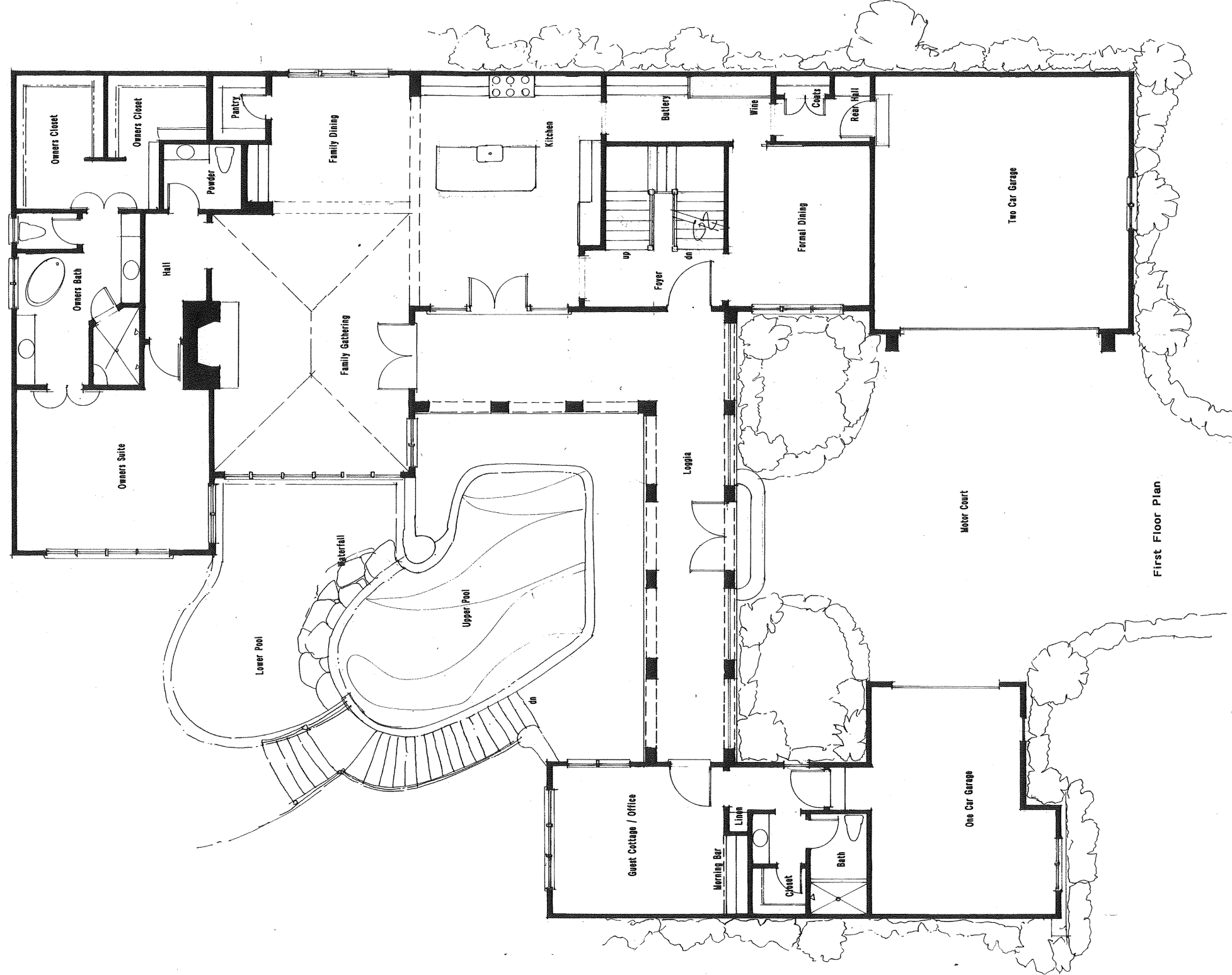


THE GHAZI COMPANY, L.L.C
ROCK CREEK DRIVE
CHARLOTTE, NORTH CAROLINA



Christopher Phelps
& Associates
a residential design firm

225 East Worthington Avenue
Suite 210
Charlotte, NC 28203
TEL: 704-377-5588
FAX: 704-377-6909



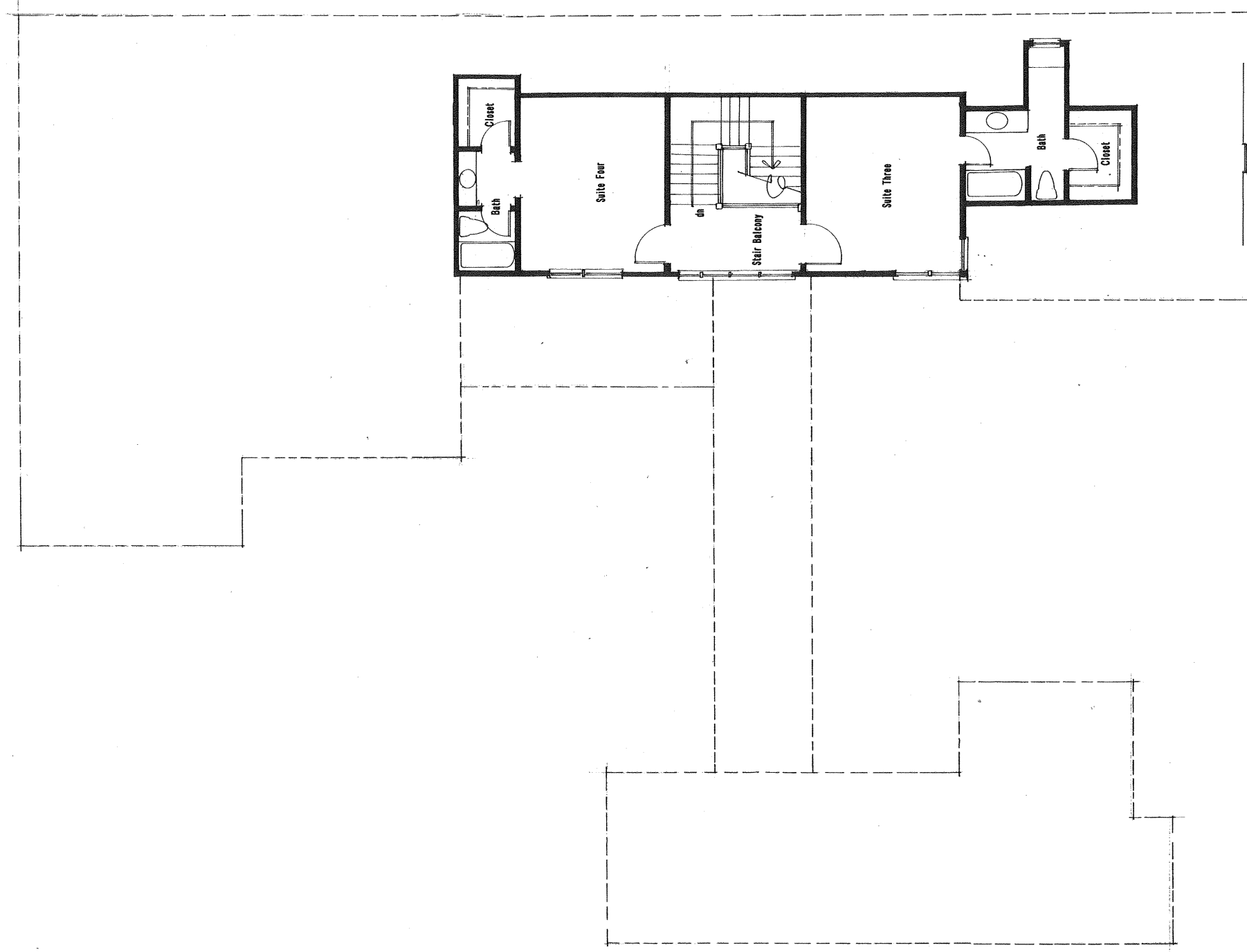
First Floor Plan

SQUARE FOOTAGE	
First Floor Heated	2,436
Second Floor Heated	688
Lower Level Heated	1,578
Guest Cottage Heated	405
Total Heated	5,108
Overage	914
Loggia Walkway	533
Unfinished Basement	293
Lower Level Loggia	574
Total Under Roof	7,422

The above square footage calculations are approximate as they are derived from a non-dimensioned design sketch. Final working drawings shall have a calculated square footage that will be accurately figured to the outside of the veneer.

THE GHAZI COMPANY, L.L.C
ROCK CREEK DRIVE
CHARLOTTE, NORTH CAROLINA





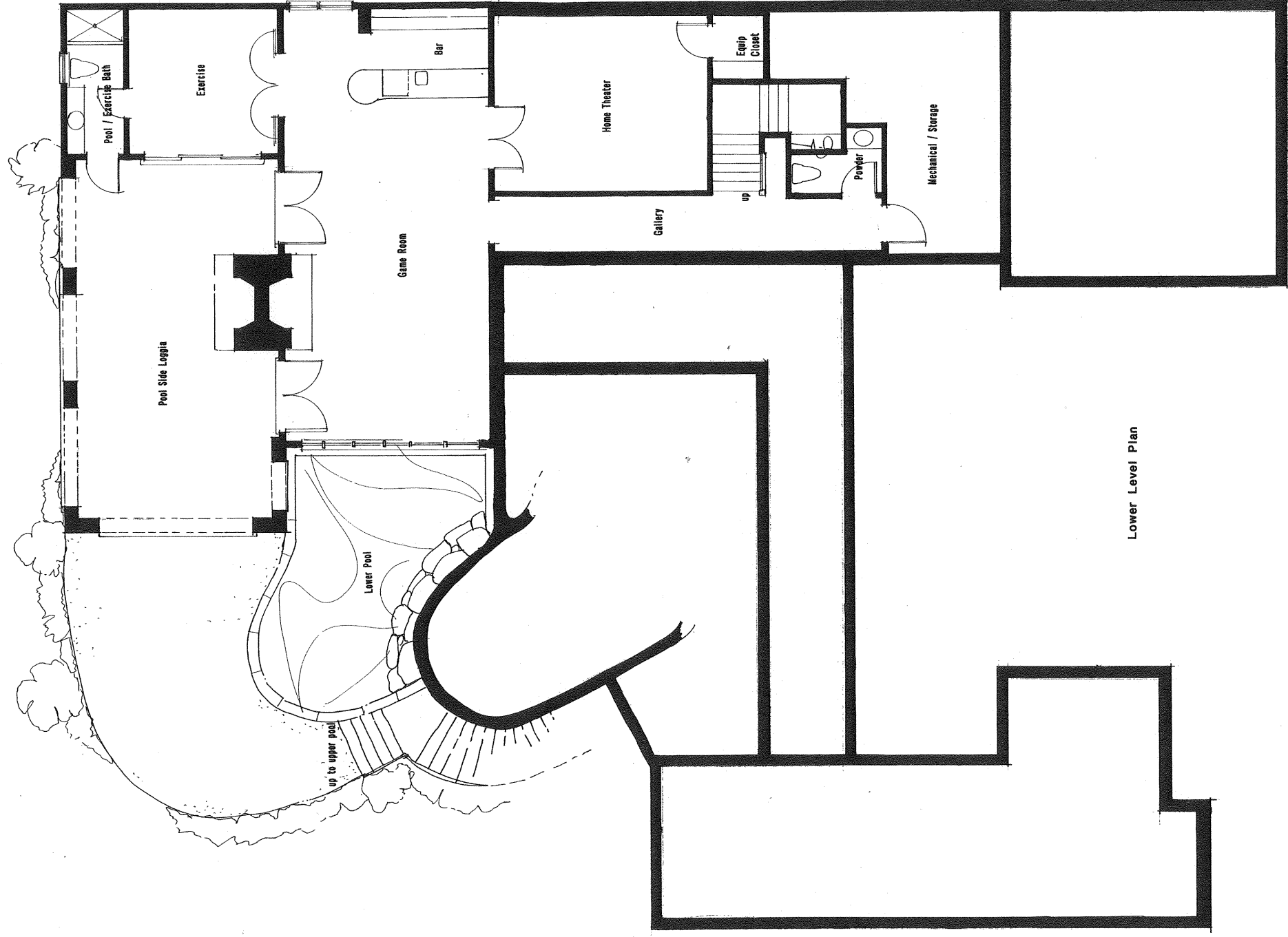
SQUARE FOOTAGE	
First Floor Heated	2,436
Second Floor Heated	688
Lower Level Heated	1,579
Guest Cottage Heated	406
Total Heated	5,108
Garages	914
Loggia/Walkway	533
Unfinished Basement	293
Lower Level Loggia	574
Total Under Roof	7,422

The above square footage calculations are approximate as they are derived from a non-dimensioned design sketch. Final square footages shall have a calculated square footage that will be accurately figured to the outside of the veneer.

Second Floor Plan

THE GHAZI COMPANY, L.L.C
ROCK CREEK DRIVE
CHARLOTTE, NORTH CAROLINA





Lower Level Plan

SQUARE FOOTAGE	
First Floor Heated	2,436
Second Floor Heated	688
Lower Level Heated	1,578
Guest Cottage Heated	406
Total Heated	5,108
Garage	914
Loggia / Walkway	533
Unfinished Basement	289
Lower Level Loggia	574
Total Under Roof	7,422

The above square footage calculations are approximate as they are derived from non-dimensioned design sketch. Final working drawings shall have a calculated square footage that will be accurately figured to the outside of the veneer.

THE GHAZI COMPANY, L.L.C
ROCK CREEK DRIVE
CHARLOTTE, NORTH CAROLINA



Christopher Phelps & Associates
 a residential design firm
 225 East Worthington Avenue
 Charlotte, NC 28203
 TEL: 704-377-6569
 FAX: 704-377-6909

November 16, 2007