



THE GHAZI COMPANY, L.L.C
ROCK CREEK DRIVE
CHARLOTTE, NORTH CAROLINA



Christopher Phelps
& Associates
a residential design firm

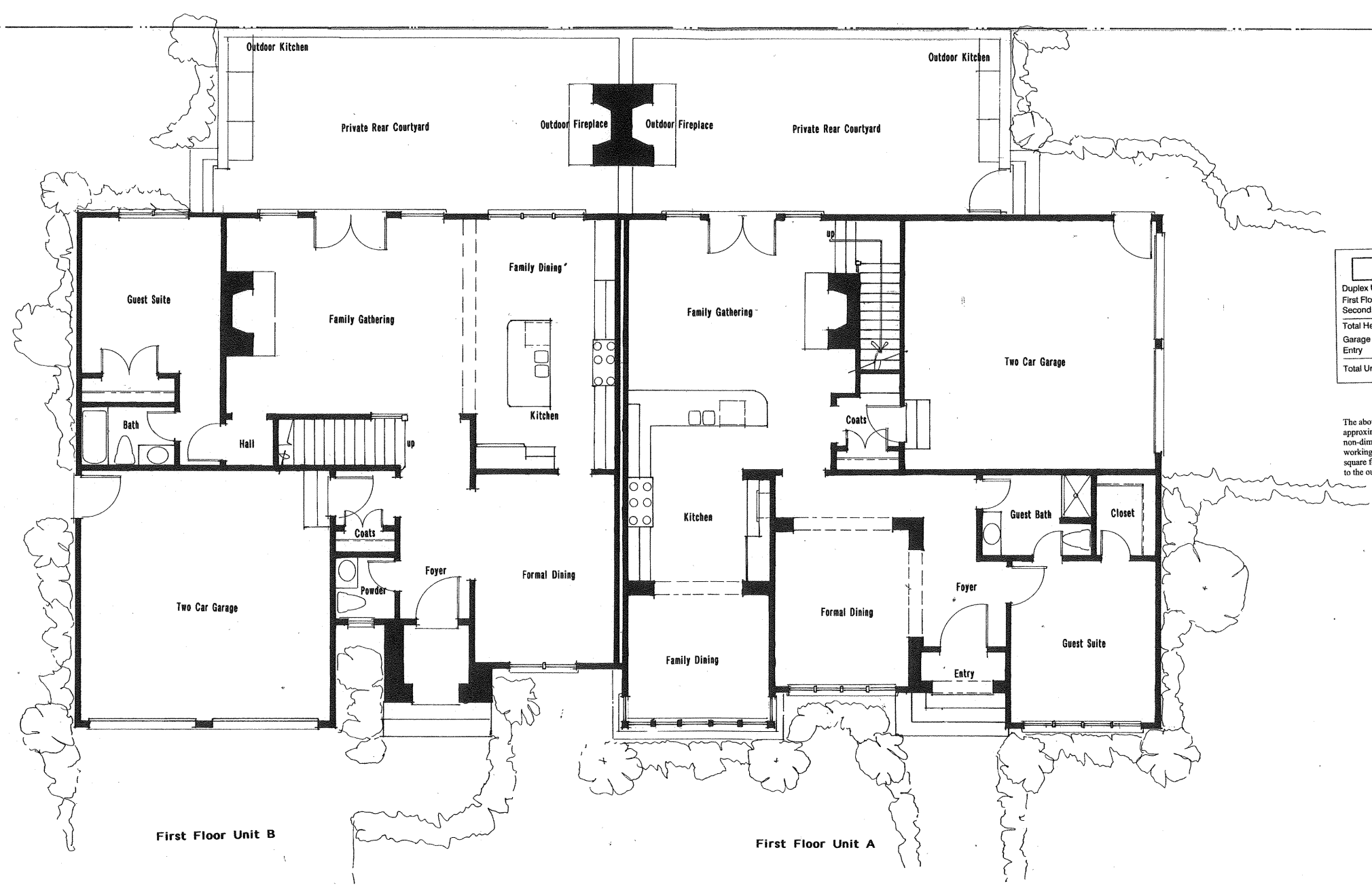
225 East Worthington Avenue
Suite 200
Charlotte, NC 28203
TEL: 704-377-6569
FAX: 704-377-6909

November 16, 2007



THE GHAZI COMPANY, L.L.C
ROCK CREEK DRIVE
CHARLOTTE, NORTH CAROLINA


Christopher Phelps
& Associates
a residential design firm
225 East Worthington Avenue
Suite 200
Charlotte, NC 28203
TEL: 704-377-5569
FAX: 704-377-6909



SQUARE FOOTAGE	
Duplex Unit A	
First Floor Heated	1,463
Second Floor Heated	1,854
Total Heated Space	3,117
Garage	469
Entry	24
Total Under Roof	3,610

The above square footage calculations are approximate as they are derived from a non-dimensioned design sketch. Final working drawings shall have a calculated square footage that will be accurately figured to the outside of the veneer.

SQUARE FOOTAGE	
Duplex Unit B	
First Floor Heated	1,684
Second Floor Heated	1,390
Total Heated Space	3,074
Garage	469
Entry	51
Total Under Roof	3,594

The above square footage calculations are approximate as they are derived from a non-dimensioned design sketch. Final working drawings shall have a calculated square footage that will be accurately figured to the outside of the veneer.

THE GHAZI COMPANY, L.L.C
ROCK CREEK DRIVE
CHARLOTTE, NORTH CAROLINA

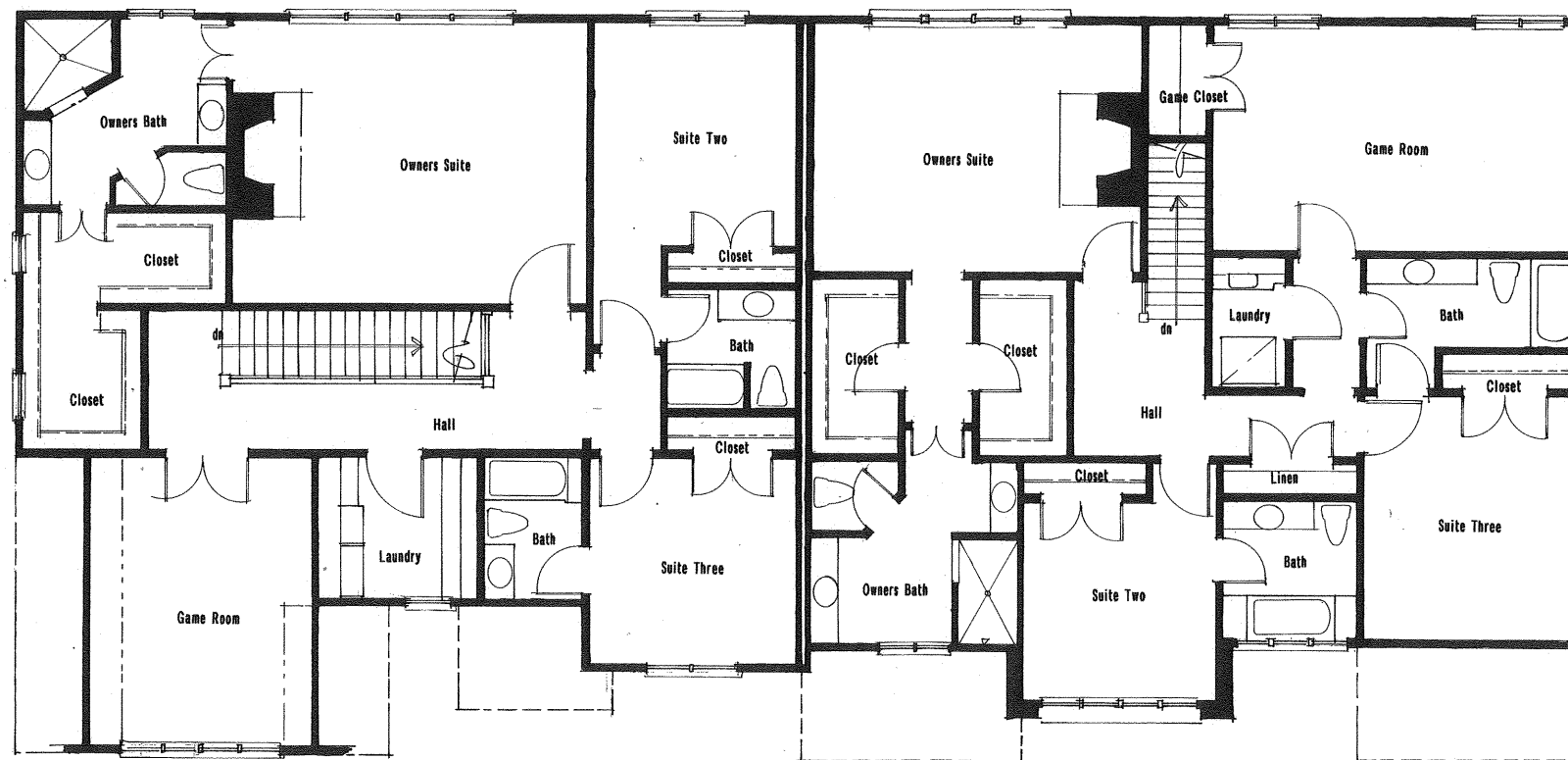


225 East Worthington Avenue
 Suite 200
 Charlotte, NC 28203
 TEL: 704-377-5569
 FAX: 704-377-6909

November 16, 2007

SQUARE FOOTAGE	
Duplex Unit B	
First Floor Heated	1,684
Second Floor Heated	1,390
Total Heated Space	3,074
Garage	469
Entry	51
Total Under Roof	3,594

The above square footage calculations are approximate as they are derived from a non-dimensioned design sketch. Final working drawings shall have a calculated square footage that will be accurately figured to the outside of the veneer.



Second Floor Unit B

Second Floor Unit A

SQUARE FOOTAGE	
Duplex Unit A	
First Floor Heated	1,463
Second Floor Heated	1,654
Total Heated Space	3,117
Garage	469
Entry	24
Total Under Roof	3,610

The above square footage calculations are approximate as they are derived from a non-dimensioned design sketch. Final working drawings shall have a calculated square footage that will be accurately figured to the outside of the veneer.

THE GHAZI COMPANY, L.L.C
ROCK CREEK DRIVE
CHARLOTTE, NORTH CAROLINA

